



CLARION PARTNERS

# For Lease

Seattle South Business Park,  
Bldg 7

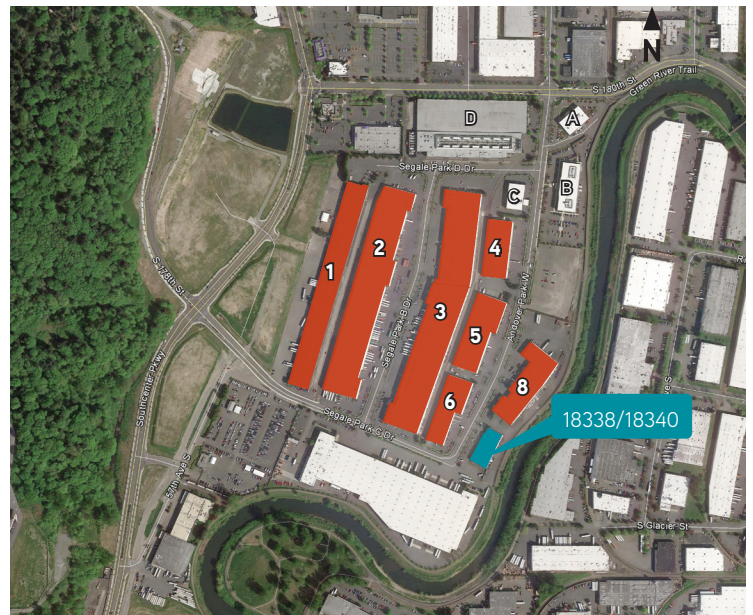
18338- 18340 Andover Park West  
Seattle, WA

21,616 Square Feet Available



## BUILDING HIGHLIGHTS

- 21,616 total shell SF available
  - Suite 18338: 12,164 SF total with 3,412 SF first floor office and 3,518 SF second floor office
  - Suite 18340: 12,970 SF total with 1,725 SF first floor office
- 21' clear height
- 2 dock-high and 2 grade-level doors
- 55 parking stalls
- Quick and easy access to I-5, I-405, SR 167, and only 10 minutes to Sea-Tac Airport
- Only minutes to Southcenter retail
- Call for asking rates

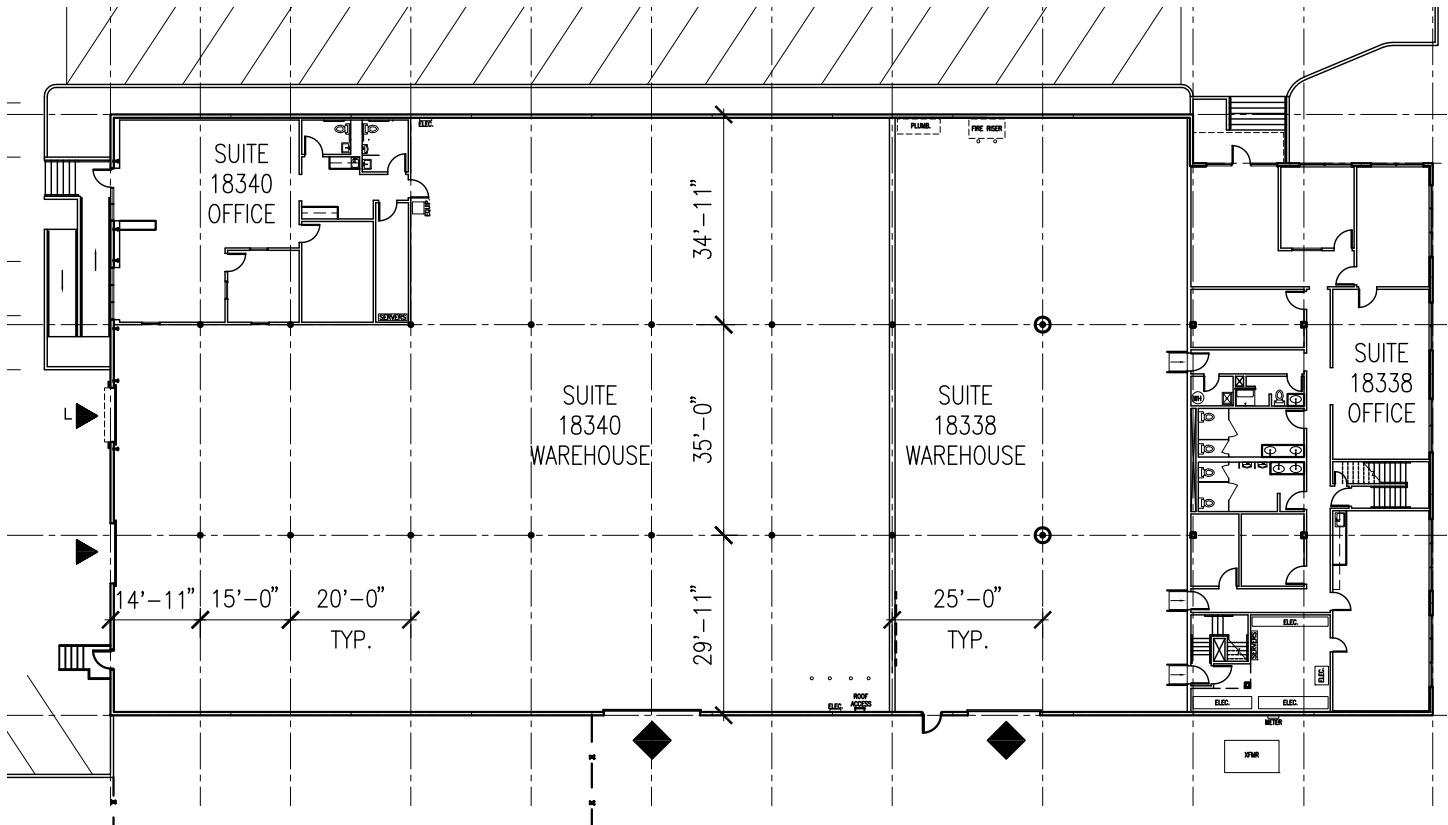




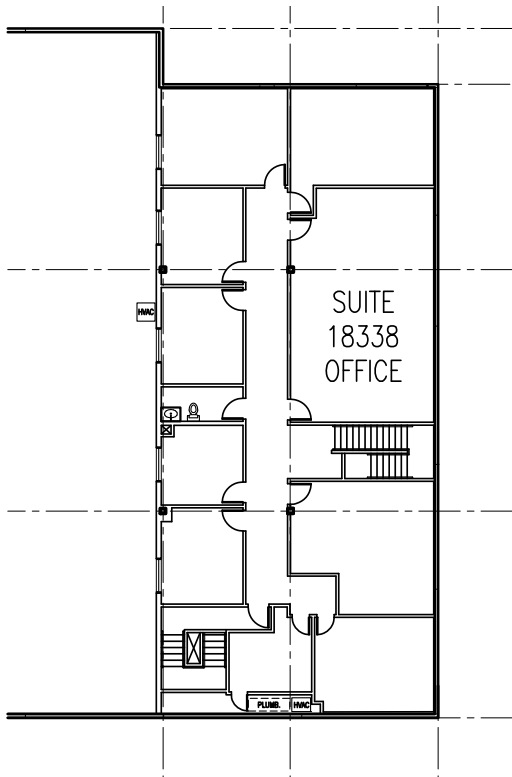
# CLARION PARTNERS

## Seattle South Business Park

### SUITE 18338/18340 1ST FLOOR PLAN



### SUITE 18340 2ND FLOOR OFFICE PLAN



## CLARION PARTNERS

[www.clarionpartners.com](http://www.clarionpartners.com)

For more information on this opportunity, please contact



MATT MCGREGOR, SIOR  
+1 206 624 7401  
[matt.mcgregor@colliers.com](mailto:matt.mcgregor@colliers.com)

BILL CONDON, SIOR  
+1 206 624 7400  
[bill.condon@colliers.com](mailto:bill.condon@colliers.com)

BOB SANTUCCI  
+1 206 287 0213  
[bob.santucci@colliers.com](mailto:bob.santucci@colliers.com)